

# Zaxcom Control Surfaces User's Manual



Mix-12



Mix-8

Updated: 2010-03-02 - 18:33



230 West Parkway, Unit 9, Pompton Plains, NJ 07444 USA  
Tel: 973-835-5000 Fax: 973-835-6633  
Email: [info@zaxcom.com](mailto:info@zaxcom.com) Website: [www.zaxcom.com](http://www.zaxcom.com)

Maintained by: Ray M. Owen, Production Sound Mixer

# Table of Contents

**TABLE OF FIGURES..... 2**

**TABLE OF TABLES ..... 3**

**CHAPTER 1 – INTRODUCTION..... 4**

    WHAT'S INCLUDED WITH THE MIX-8.....4

    WHAT'S INCLUDED WITH THE MIX-12 .....4

    MIX-8 FEATURES .....4

    MIX-12 FEATURES .....4

    PRODUCT SUPPORT.....4

    GETTING TO KNOW YOUR MIX-8.....5

    GETTING TO KNOW YOUR MIX-12.....6

**CHAPTER 2 – INSTALLATION..... 7**

    MIX-8.....7

*Typical Setup Sequence*.....7

        DC Power .....7

    MIX-12 .....7

*Typical Setup Sequence*.....7

        DC Power .....7

**CHAPTER 3 – OPERATION..... 8**

    MIX-8.....8

*Channel Strip* .....8

            Trim rotary fader.....8

            Pre-fader Input meter.....8

                Adjusting the Meter Brightness.....8

            Linear fader .....8

    MIX-12 .....9

*Channel Strip* .....9

            Trim rotary fader.....9

            Pre-fader Input meter.....9

                Adjusting the Meter Brightness.....10

            BUS key .....10

                BUS key - Input page Shortcuts .....10

                BUS key - Output page Shortcuts.....11

            PFL key .....11

            EQ key .....11

                EQ key Shortcuts.....12

            CH key (Channel).....12

                CH key Shortcuts .....13

            Linear fader .....13

            Faders 9 through 12.....13

        Keyboard .....13

        OUT# rotary faders.....13

        REC and STOP keys.....13

        TONE key .....13

            Reassigning the Tone Key .....13

        TALK1, TALK2 and SLATE keys.....14

**CHAPTER 4 – SPECIFICATIONS..... 15**

    MIX-8 SPECIFICATIONS.....15

    MIX-12 SPECIFICATIONS .....15

**CHAPTER 5 – ZAXCOM WARRANTY POLICY AND LIMITATIONS..... 16**

## Table of Figures

Figure 1-1 Mix-8 Top View & Back View..... 5

Figure 1-2 Mix-12 Top View & Back View ..... 6

Figure 3-1 Input (#) – BUS page (Analog/Digital) ..... 10  
Figure 3-2 Output Channel – BUS page (Analog) ..... 11  
Figure 3-3 Input (#) – EQ page (Analog/Digital)..... 12  
Figure 3-4 Input (#) page – (Analog/Digital)..... 13

**Table of Tables**

Table 3-1 Mix-8 Fader - Channel Association ..... 8  
Table 3-2 Mix-12 Fader - Channel Association..... 9  
Table 3-3 Input Channel BUS, Matrix Symbols ..... 10

## Chapter 1 – Introduction

The Zaxcom Mix-8 and Mix-12 control surfaces are for the embedded digital audio mixer in a Deva IV, Deva V, Deva 5.8, Deva 16, Fusion 10 and Fusion 12 location recorders.

Both are fully digital. All mixing is performed in the digital domain using a floating point DSP ensuring the highest quality audio.

No additional software is required. The recorder's software recognizes when it connects to the control surface and makes the necessary connections to allow the control surface to function. Be aware, if your recorder does not have the Effects Package included, connecting one of the control surfaces temporarily enables the Effects Package for the duration of the recorder being turned ON.

### What's included with the Mix-8

- RS-422 cable
- 12 VDC Power Supply
- User Manual on CD-ROM

### What's included with the Mix-12

- RS-422 cable
- 12 VDC Power Supply
- User Manual on CD-ROM

### Mix-8 Features

- Easily controls fader levels
- Control of input trims
- True digital mixing console
- Zero time offset design for no phase distortion channel-to-channel
- No audio cabling from mixer to recorder
- Floating point DSP digital mixing with no internal clipping or quantization issues
- Unlimited routing
- No sample rate issues between mixer and recorder
- Cross points can be pre- or post-fader with phase inversion
- All cross points are cross faded (never any clicks or pops)

### Mix-12 Features

- True digital mixing console
- Three band shelving EQ with two notch filters and high pass per channel
- Soft knee compressor with makeup gain
- All cross points are cross faded (never any clicks or pops)
- Cross points can be pre- or post-fader with phase inversion
- Zero time offset design for no phase distortion channel-to-channel
- No audio cabling from mixer to recorder
- Floating point DSP digital mixing with no internal clipping or quantization issues
- Unlimited routing
- No sample rate issues between mixer and recorder
- Integrated RECORD and STOP keys
- Integrated QWERTY keyboard for metadata input

### Product Support

Download the latest **Firmware** from: [http://www.zaxcom.com/support\\_software\\_updates.htm](http://www.zaxcom.com/support_software_updates.htm).

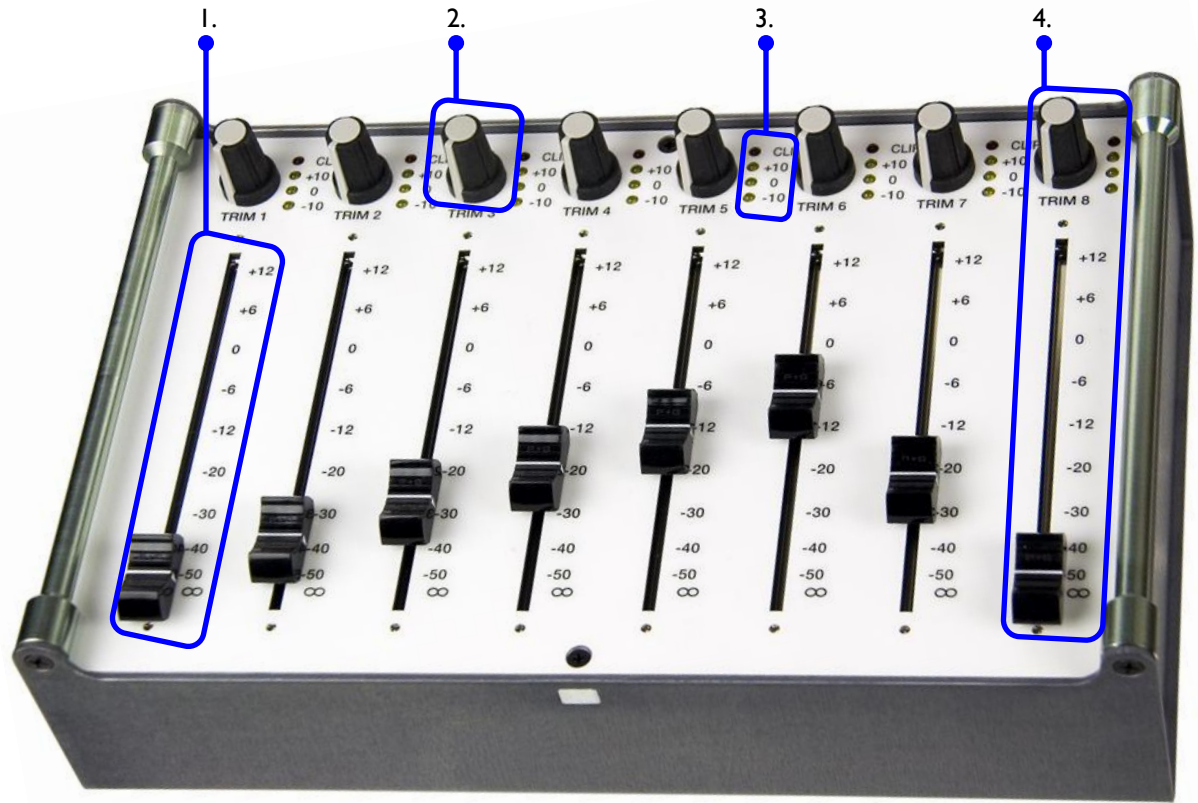
Download the latest **User Manual** from: [http://www.zaxcom.com/support\\_instructional\\_manuals.htm](http://www.zaxcom.com/support_instructional_manuals.htm).

**Register** your new Zaxcom Product at: [http://www.zaxcom.com/support\\_product\\_registration.htm](http://www.zaxcom.com/support_product_registration.htm).

**Submit Technical Questions** at: [http://www.zaxcom.com/support\\_submit\\_tech\\_questions.htm](http://www.zaxcom.com/support_submit_tech_questions.htm).

Request an **RMA #** at: [http://www.zaxcom.com/support\\_repair\\_services.htm](http://www.zaxcom.com/support_repair_services.htm)

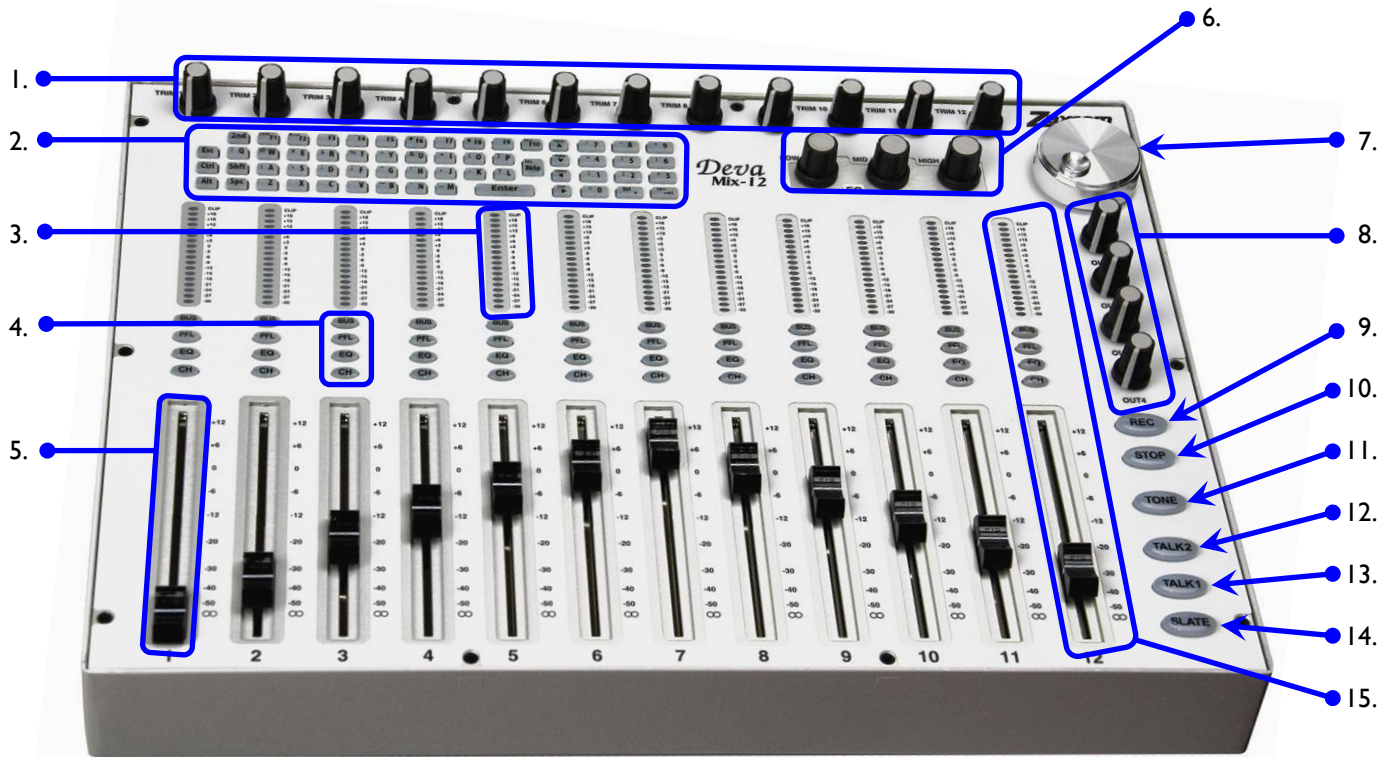
Getting to Know your Mix-8



- |  |   |
|--|---|
| <ul style="list-style-type: none"> <li>1. <b>LINEAR</b> fader</li> <li>2. <b>TRIM</b> knob</li> <li>3. Pre-fader input meter (CLIP, +10, 0 -10)</li> </ul> | <ul style="list-style-type: none"> <li>4. One complete channel strip consisting of:<br/><b>TRIM</b> (#2), Meter (#3) and <b>LINEAR</b> fader (#1)</li> <li>5. Power connector</li> <li>6. Serial port – RS-422 Ports</li> </ul> |
|--|---|

Figure 1-1 Mix-8 Top View & Back View

# Getting to Know your Mix-12



- |   |  |
|---|--|
| 1. <b>TRIM</b> knobs (part of each strip {#15}) | 11. <b>TONE</b> key  |
| 2. QWERTY keypad                                | 12. <b>TALK2</b> key   |
| 3. Pre-fader input meter                        | 13. <b>TALK1</b> key   |
| 4. Channel keys ( <b>BUS, PFL, EQ, CH</b> )     | 14. <b>SLATE</b> key   |
| 5. <b>LINEAR</b> fader                          | 15. One channel strip consists of:<br><b>TRIM</b> knob (#1), Input meter (#3),<br>Channel keys (#4) and <b>LINEAR</b> fader (#5) |
| 6. Equalization ( <b>LOW, MID, HIGH</b> )       | 16. COM 1 & COM 2 – RS-422 Ports 1 & 2   |
| 7. <b>JOG</b> wheel                             | 17. XLR-4M – standard 12VDC connector  |
| 8. <b>OUT#</b> rotary faders (Ch 1- 4)          | 18. Power ON/OFF rocker switch   |
| 9. <b>REC</b> key                               |  |
| 10. <b>STOP</b> key                             |  |

Figure 1-2 Mix-12 Top View & Back View

## Chapter 2 – Installation

### Mix-8

#### Typical Setup Sequence

1. Connect the RS-422 cable from your recorder's serial connector to the Mix-8's "Serial" connector.
2. Set your recorder's Serial Port Mode to RS-422 from the **Operating Mode** page.  
(**MENU** key → **Setup** button → **Operating Mode** button)
3. Enable Mix-12 support on your recorder from the **Mix-12 Setup** page.  
(**MENU** key → **Setup** button → **Mix12** button)

**NOTE:** Your recorder will retain the Operating Mode settings when not powered up. However, if a factory restore is performed, these settings must be re-enabled since they are not the default settings.

4. Connect the 12 VDC power input.

#### DC Power

The supplied AC-to-DC power convertor provides the proper voltage to the Mix-8. However, if a DC power source is used, it must supply 8 to 16 Volts @ 0.25 amps.

### Mix-12

#### Typical Setup Sequence

1. Connect the RS-422 cable from your recorder's serial connector to the Mix-12's "Com 1" connector.

**NOTE:** The "Com 2" port is reserved for future use (displaying the meters on a computer screen).

2. Set your recorder's Serial Port Mode to RS-422 from the **Operating Mode** page.  
(**MENU** key → **Setup** button → **Operating Mode** button)
3. Enable Mix-12 support on your recorder from the **Mix-12 Setup** page.  
(**MENU** key → **Setup** button → **Mix12** button)

**NOTE:** Your recorder will retain the Operating Mode settings when not powered up. However, if a factory restore is performed, these settings must be re-enabled since they are not the default settings.

4. Connect the 12 VDC power input.
5. Turn ON the Mix-12's power switch.

#### DC Power

The supplied AC-to-DC power convertor provides the proper voltage to the Mix-12. However, if a DC power source is used, it must supply 8 to 16 Volts @ 0.25 amps.

## Chapter 3 – Operation

**NOTE:** When it is necessary to update parameter values, you can use the front panel numeric keypad, an attached keyboard and/or the keypad on the attached Mix-12. To enter a negative number while entering data manually, enter a zero (0) before entering the value.

### Mix-8

#### Channel Strip

Each channel strip is composed of several items (from top to bottom):

- **TRIM** rotary fader
- Pre-fader input meter
- **LINEAR** fader

Each channel strip is permanently assigned to a specific recorder channel as follows (and cannot be changed):

Fader	Channel
1	Analog Input 1
2	Analog Input 2
3	Analog Input 3
4	Analog Input 4
5	Analog Input 5
6	Analog Input 6
7	Analog Input 7
8	Analog Input 8

Table 3-1 Mix-8 Fader - Channel Association

You can assign digital inputs 1 through 8 to the rotary faders on the Deva/Fusion.

**IMPORTANT:** You must ensure all channels controlled by the Mix-8 are **NOT** assigned to the rotary faders on your recorder. Faders are assigned in the **Faders** page (**MENU** key > **Faders** button > **Fader Assign** button).

#### Trim rotary fader

The **TRIM** rotary fader can attenuate up to 20 dB or boost up to 30 dB. The limits of attenuation and amplification are controlled by the combination of the recorder and software. Rotating the fader counter-clockwise reduces the pre-fader audio and rotating the fader clockwise increases the pre-fader audio.

The actual amount of amplification or attenuation can be seen on the **Input (#)** page on your recorder.

#### Pre-fader Input meter

This meter consists of a series of 4 LEDs (CLIP, +10, 0 -10). This meter is placed in the signal path after the **TRIM** rotary fader and before the **LINEAR** fader, thus it shows the contribution of the **TRIM** rotary fader only. To see the effect of the **LINEAR** fader, view the **Home** page on your recorder.

**NOTE:** The PFL illumination is inverted whenever the Mix-12 is not metering the pre-fader analog input bus.

**NOTE:** The Mix-12 metering mode is not saved when powered down. The Mix-12 default setting of metering the pre-fader analog is always used when first powered up.

#### Adjusting the Meter Brightness

You can adjust the meter brightness on the Mix-8 to one of eight levels. The brightest setting (8) allows the meters to be seen in direct sunlight.

Use the **Meter Brightness** button in the **Mix12 Setup** page (**MENU** key → **Setup** button → **Mix12** button) to adjust how bright the meter is illuminated. The current value is saved in the configuration settings.

#### Linear fader

To use the faders on the Mix-8, you must set up the audio to be routed to the output busses post fader. They cannot be used when the recorder audio is routed using the pre-fader option.

## Mix-12

### Channel Strip

Each channel strip is composed of several items (from top to bottom):

- **TRIM** rotary fader
- Pre-fader input meter
- **BUS** key
- **PFL** key
- **EQ** key
- **CH** key
- **LINEAR** fader

Each channel strip is permanently assigned to a specific recorder channel as follows (and cannot be changed):

Fader	Channel
1	Analog Input 1
2	Analog Input 2
3	Analog Input 3
4	Analog Input 4
5	Analog Input 5
6	Analog Input 6
7	Analog Input 7
8	Analog Input 8
9	Digital Input 1
10	Digital Input 2
11	Digital Input 3
12	Digital Input 4

Table 3-2 Mix-12 Fader - Channel Association

You can assign digital inputs 5 through 8 to the rotary faders on the Deva/Fusion.

**IMPORTANT:** You must ensure all channels controlled by the Mix-12 are **NOT** assigned to the rotary faders on your recorder. Faders are assigned in the **Faders** page (**MENU** key → **Faders** button → **Fader Assign** button).

### Trim rotary fader

The **TRIM** rotary fader can attenuate up to 20 dB or boost up to 30 dB. The limits of attenuation and amplification are controlled by the combination of the recorder and software. Rotating the fader counter-clockwise reduces the pre-fader audio and rotating the fader clockwise increases the pre-fader audio.

The actual amount of amplification or attenuation can be seen on the **Input (#)** page on your recorder.

### Pre-fader Input meter

This meter consists of a series of 18 LEDs. This meter is placed in the signal path after the **TRIM** rotary fader and before the **LINEAR** fader, thus it shows the contribution of the **TRIM** rotary fader only. To see the effect of the **LINEAR** fader, view the **Home** page on your recorder. To get the best possible signal, the input should read between 0dB and +6dB.

In the **Home** page and **Cue** page, pressing the **M** key toggles the Mix-12 metering between pre-fader input bus metering and disk mix metering.

**NOTE:** The PFL illumination is inverted whenever the Mix-12 is not metering the pre-fader analog input bus.

**NOTE:** The Mix-12 metering mode is not saved when powered down. The Mix-12 default setting of metering the pre-fader analog is always used when first powered up.

### Adjusting the Meter Brightness

You can adjust the meter brightness on the Mix-12 to one of eight levels. The brightest setting (8) allows the meters to be seen in direct sunlight.

Use the **Meter Brightness** button in the **Mix12 Setup** page (**MENU** key → **Setup** button → **Mix12** button) to adjust how bright the meter is illuminated. The current value is saved in the configuration settings.

### BUS key

An individual **BUS** page allows the routing for a single channel on the recorder's internal mix busses and to the output busses. The number keypad on the Mix-12 can be used to make channel assignments on the recorder and assign the outputs.

The illuminated **BUS** key indicates channel, output or disk that is in the mix while in STOP mode. While in RECORD mode, the illuminated **BUS** key indicates the channels in the disk mix.

When the **BUS** key is pressed once, the **Input (#) – BUS** page appears on your recorder.

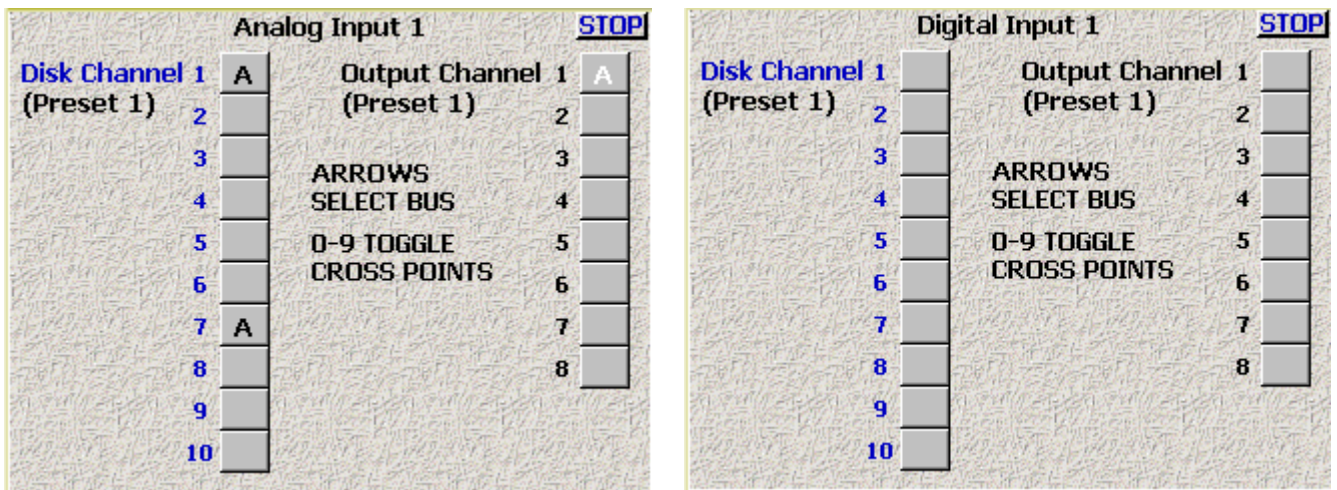


Figure 3-1 Input (#) – BUS page (Analog/Digital)

Pressing a number (on the built-in keypad, the recorder front panel or a separate keyboard) toggles between the following:

Analog Channels (strips 1 – 8)	
Black A	analog post-fader
Black A with line	analog post-fader inverted
White A	analog pre-fader
White A with line	analog pre-fader inverted
Blank	not assigned

Digital Channels (strips 9 – 12)	
Black D	digital post fader
Black D with line	digital post fader inverted
White D	digital pre-fader
White D with line	digital pre-fader inverted
Blank	not assigned

Table 3-3 Input Channel BUS, Matrix Symbols

### BUS key - Input page Shortcuts

The list below contains the keys that perform special functions.

- **LEFT ARROW** and **RIGHT ARROW** keys – toggles between Disk Channel and Output Channel. The selected group's title is **blue**.
- **CH** key – Toggles the cross point (see Table 3-3 above).

When the **BUS** key is pressed a second time, the output routing for that channel appears on your recorder.

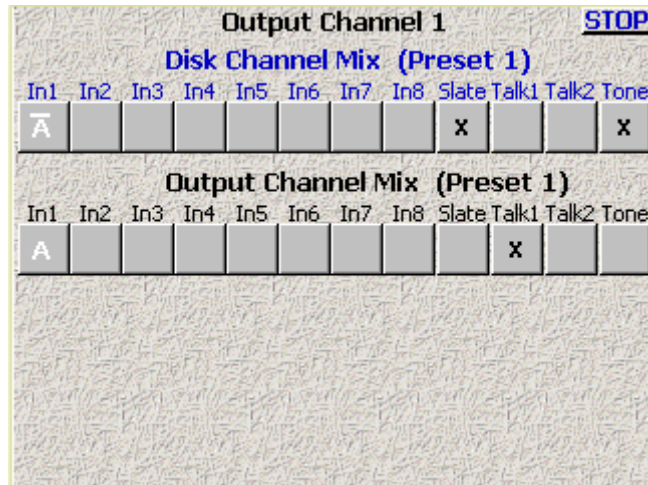


Figure 3-2 Output Channel – BUS page (Analog)

The **TALK** and **SLATE#** keys are selected in this page.

### BUS key - Output page Shortcuts

The list below contains the keys that perform special functions.

- **UP ARROW** and **DOWN ARROW** keys – toggles between Disk Channel and Output Channel. The selected group's title is **blue**.
- **SLATE, TALK1, TALK2, TONE** keys – toggle cross points in the output mix.

**IMPORTANT:** In the **Output** page, any signal sent to the Disk Channel Mix will be recorded. Unless you want to record your private line conversations, on top of the pristine audio you are recording, route your PL to the Output Channel Mix.

When the **BUS** key is pressed a third time, it exits.

### PFL key

The **PFL** key routes one or more channels directly to the headphone bus in a pre-fader mode (think solo). When the **PFL** key is active, the current headphone selection will be suspended. Pressing the **PFL** key activates and deactivates the PFL function. Only the headphone use is affected by the PFL function. Multiple inputs can be selected when using the PFL function by pressing each key in turn.

When the metering is changed (by pressing the **M** key, on the Mix-12's keyboard or an attached keyboard) the **PFL** key's illumination is inverted.

### EQ key

The Deva/Fusion EQ is very powerful. It consists of five filters. A three band parametric and two notch filters are available on each channel. The EQ is present in both pre- and post-fader and cannot be separated. When EQ is changed, all audio on that channel is affected. However, adding EQ does not change the timing of the audio as it passes through a channel, any delay remains constant.

**NOTE:** Each channel has its own filter set. If a filter is not in use, leave the EQ for that channel disabled. That saves processing power. It may be important if a number of the effects need to be "On" at the same time.

Pressing the **EQ** key, displays the **EQ** page for that channel on the recorder's screen and illuminates the **CH** key to further remind the operator which channel's EQ is being modified.

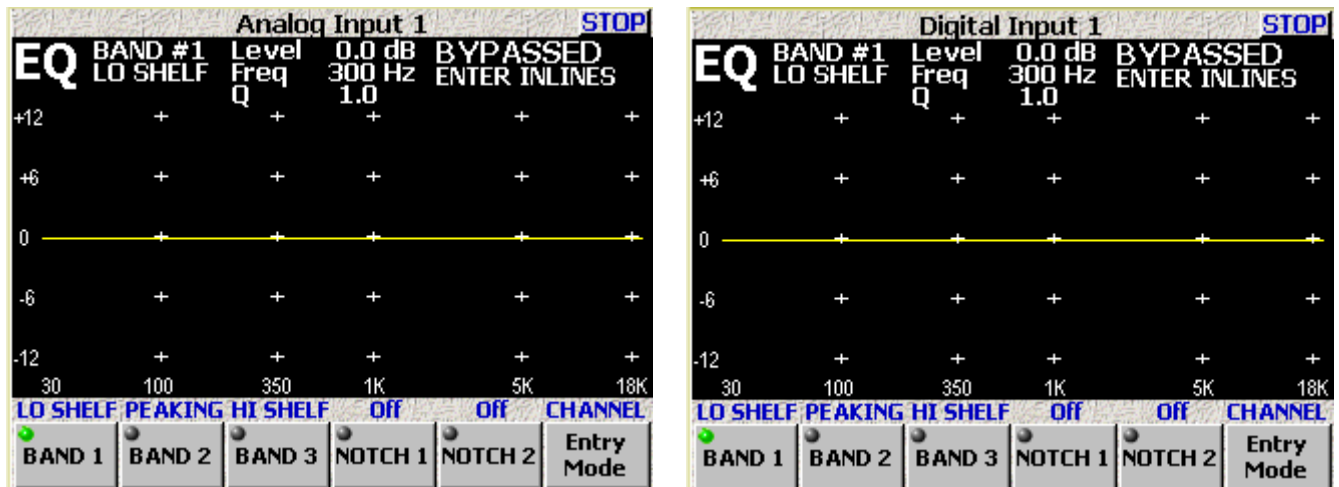


Figure 3-3 Input (#) – EQ page (Analog/Digital)

Pressing any other channel's **EQ** key displays the new channel's **EQ** page and illuminates only that channel's **CH** key.

**NOTE:** If you press and hold the **EQ** key, when you release the key you will exit the **EQ** page.

### EQ key Shortcuts

While in the **EQ** page, the following keys are in effect:

- **ENTER** key – alternately enables (inline) and disables (bypassed) ALL EQ settings for the current channel. When a channel's EQ has been bypassed, the settings are still maintained until they are specifically modified.
- **RIGHT ARROW** key – advances to the next filter band (note the green light in the buttons on the bottom of the page).
- **LEFT ARROW** key – advances to the previous filter band.
- **CH** key – advances to the next EQ band.
- **UP ARROW** key – changes the current filter's, filter type:
  - Band 1 – 3 are band filters selectable as Lo Shelf, Hi Shelf, Peaking or Off.
  - Notch 1 & 2 are notch filters selectable as Off or On.
- **U** key – resets the Level field of all bands of the current channel to 0.0, effectively negating them.
- **L** key – changes focus to the **Level** field.
- **F** key – changes focus to the **Frequency** field.
- **Q** key – changes focus to the **Q** field.
- **LOW EQ knob** – changes the view to band 1 and adjusts the **Level** field.
- **MID EQ knob** – changes the view to band 2 and adjusts the **Level** field.
- **HIGH EQ knob** – changes the view to band 3 and adjusts the **Level** field.
- **JOG wheel** – changes the value of **Frequency** or **Q** fields.
- **EQ** key – advances to the **EQ Memory** page.
- **E** key – advances to the **EQ Memory** page.

While in the **EQ Memory** page, the following keys are in effect:

- **CH** key – toggles Load/Save mode.
- **1** thru **5** keys – pressing one of them loads/saves (depending on the mode) in the respective memory.
- **EQ** key – exits the **EQ** page
- **E** key – exits the **EQ** page

### CH key (Channel)

On each channel strip, the **CH** key allows direct access to that channel's effects and characteristics.

The **CH** key illuminates indicating the channel selected. When the **SLATE**, **TALK 1** or **TALK 2** key is pressed, the channels they are being mixed to are illuminated.

Pressing the **CH** key opens the **Input (#)** page for that channel, allowing easy access to setting the input type,

phantom power options, EQ, channel assignments, channel delay and more. Pressing the **CH** key again, takes you back to the page you were previously on.

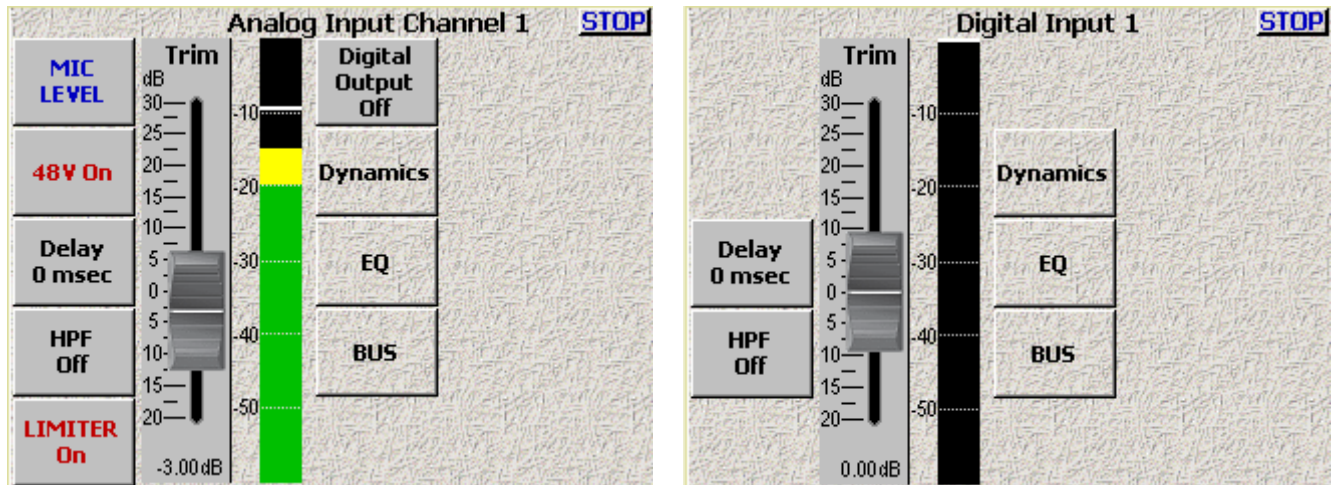


Figure 3-4 Input (#) page – (Analog/Digital)

### CH key Shortcuts

- **EQ** page – Pressing the **CH** key changes which of the five filters is being controlled by the jog wheel. Pressing the **CH** key moves the control knob to the next filter.
- **BUS** page – Pressing the **CH** key toggles the cross point.

### Linear fader

To use the faders on the Mix-12, you must set up the audio to be routed to the output busses post fader. They cannot be used when the recorder audio is routed using the pre-fader option.

### Faders 9 through 12

Deva/Fusion recorders have only eight microphone inputs. However faders 9 through 12 allow you to use the four AES digital inputs on the recorder for additional inputs. You can assign these digital inputs to any track or place them on any output pre- or post-fader.

If you would like to use these for additional microphone inputs, you need to use an external A/D converter. When using an external ADC, the word clock on the Deva feeds the external converter, so it is in sync with the recorder's clock. You always want the recorder's clock to be the master when using an external ADC.

### Keyboard

The built-in QWERTY keyboard can be used to enter metadata. Also, see the "Shortcut Keys" chapter in your Deva or Fusion User Manual.

### OUT# rotary faders

Both analog and digital output levels of busses 1 through 4 are controlled by the **Out# rotary faders**, which are adjustable from infinity to 0 dBu (clockwise). These busses should be used to feed Comteks or any device where an output level adjustment is necessary.

You cannot adjust the level of outputs 5 and 6 from the Mix-12.

### REC and STOP keys

The **RECORD** and **STOP** keys on the Mix-12 are identical to those on the Deva/Fusion and reflect the current transport status of the recorder itself.

### TONE key

The **TONE** key toggles Tone ON and OFF. The key lights when Tone is active.

### Reassigning the Tone Key

The **TONE** key can be reassigned in the **Mix 12 Setup** page on your recorder to perform one of the following functions:

- **Tone**
- **Home Screen**
- **Escape**
- **Play**

- **Unassigned** - This essentially disables the **TONE** key.

**TALK1, TALK2 and SLATE keys**

**NOTE:** The **SLATE**, **TALK1** and **TALK2** keys can be pressed at the same time to talk to each destination at the same time.

The **SLATE** key on the Mix 12 is a duplicate of the **SLATE** key on the recorder's front panel.

## Chapter 4 – Specifications

### Mix-8 Specifications

Operating Temp. Range	-20 to +60 C
Meters	8 – 4 LED segments per meter
Faders	8 – 100 mm faders
Trimmers	8 – rotary
Weight	4 lbs (1.8 kg)
Dimensions (H x W x D)	6.88" x 10.56" x 3.13" (174.8 mm x 268.2 mm x 79.5 mm)
Data Connection	DB-9 (DE-9) RS422 to Host Recorder
Power	8 to 16 VDC @ 500 mA
Power Connector	Barrel - M

### Mix-12 Specifications

Operating Temp. Range	-20 to +60 C
Meters	12 – 18 LED segments per meter
Channel EQ buttons	12 – 4 buttons each
Input Faders	12 – 100 mm faders
Trimmers	12 – rotary
EQ levels	3 – rotary
Joq Wheel	1
Output Faders	4 – rotary
Buttons	REC, STOP, TONE, TALK1, TALK2, SLATE
Built-in Keyboard	60 keys
Weight	8.6 lbs (3.9 kg)
Dimensions (H x W x D)	12.38" x 17" x 4" (314.5 mm x 431.8 mm x 101.6 mm)
Data Connection	2 – DB-9 (DE-9) RS422 to Host Recorder
Power	8 to 16 VDC @ 500 mA
Power Connector	XLR-4M

## Chapter 5 – Zaxcom Warranty Policy and Limitations

Zaxcom Inc. values your business and always attempts to provide you with the very best service.

No limited warranty is provided by Zaxcom unless your Zaxcom Deva Mix-8/Mix-12 ("Product") was purchased from an authorized distributor or authorized reseller. Distributors may sell Product to resellers who then sell Product to end users. Please see below for warranty information or obtaining service. No warranty service is provided unless the Product is returned to Zaxcom Inc. or a Zaxcom dealer in the region where the Product was first shipped by Zaxcom.

### Warranty Policy

Zaxcom Product carries a Standard Warranty Period of one (1) year.

**NOTE:** The warranty period commences from the date of delivery from the Zaxcom dealer or reseller to the end user.

There are no warranties which extend beyond the face of the Zaxcom limited warranty. Zaxcom disclaims all other warranties, express or implied, regarding the Product, including any implied warranties of merchantability, fitness for a particular purpose or non-infringement. In the United States, some laws do not allow the exclusion of the implied warranties.

### Return Material Authorization (RMA)

No Product may be returned directly to Zaxcom without first contacting Zaxcom for a Return Material Authorization ("RMA") number. If it is determined that the Product may be defective, you will be given an RMA number and instructions for Product return. An unauthorized return, i.e. one for which an RMA number has not been issued, will be returned to you at your expense. Authorized returns are to be shipped prepaid and insured to the address on the RMA in an approved shipping container. Your original box and packaging materials should be kept for storing or shipping your Product. To request an RMA, please visit the Zaxcom Repair Services page ([http://www.zaxcom.com/support\\_repair\\_services.htm](http://www.zaxcom.com/support_repair_services.htm)) and complete the form. You will receive an email or telephone call with the RMA #. Please write the RMA# on the front of the package. If you don't have internet access, you may request an RMA # by telephone. Zaxcom will return the warranty repair via 2<sup>nd</sup> day UPS or FedEx at their discretion. If overnight service is required, a FedEx or UPS account number must be provided to Zaxcom to cover shipping expenses.

### Warranty Limitations

Zaxcom's limited warranty provides that, subject to the following limitations, each Product will be free from defects in material and workmanship and will conform to Zaxcom's specification for the particular Product.

#### Limitation of Remedies

Your exclusive remedy for any defective Product is limited to the repair or replacement of the defective Product.

Zaxcom may elect which remedy or combination of remedies to provide in its sole discretion. Zaxcom shall have a reasonable time after determining that a defective Product exists to repair or replace a defective Product. Zaxcom's replacement Product under its limited warranty will be manufactured from new and serviceable used parts. Zaxcom's warranty applies to repaired or replaced Product for the balance of the applicable period of the original warranty or thirty days from the date of shipment of a repaired or replaced Product, whichever is longer.

#### Limitation of Damages

Zaxcom's entire liability for any defective Product shall, in no event, exceed the purchase price for the defective Product. This limitation applies even if Zaxcom cannot or does not repair or replace any defective Product and your exclusive remedy fails of its essential purpose.

#### No Consequential or Other Damages

Zaxcom has no liability for general, consequential, incidental or special damages. These include loss of recorded data, the cost of recovery of lost data, lost profits and the cost of the installation or removal of any Product, the installation of replacement Product, and any inspection, testing or redesign caused by any defect or by the repair or replacement of Product arising from a defect in any Product.

In the United States, some states do not allow exclusion or limitation of incidental or consequential damages, so the limitations above may not apply to you. This warranty gives you specific legal rights and you may also have other rights, which vary from state to state.

#### Your Use of the Product

Zaxcom will have no liability for any Product returned if Zaxcom determines that:

- The Product was stolen.
- The asserted defect:
  1. Is not present,
  2. Cannot reasonably be fixed because of damage occurring when the Product is in the possession of someone other than Zaxcom, or
  3. Is attributable to misuse, improper installation, alteration, including removing or obliterating labels and opening or removing external covers (unless authorized to do so by Zaxcom or an authorized Service Center), accident or mishandling while in the possession of someone other than Zaxcom.
- The Product was not sold to you as new.

#### Additional Limitations on Warranty

Zaxcom's warranty does not cover Product, which has been received improperly packaged, altered or physically abused.